

**ATCHISON COUNTY ROW CORP**  
**160 ACRES / \$3750**



**List Price:** \$600.000.00

**Location:** East of Tarkio, MO on Hay 136 To Rt. N. North on Gravel V Ave Rd 1/2 Miles, Farm on West side gravel rd.

**Legal:** Twp. 65N, Rng 39 W., Sec. 15

**Description:** Atchison Co. row crop, Hill Land, terraced with extensive work done

**Taxes:** Est. \$541.86

**Tillable :** 139.6 Tillable, 47.3 Corn Base, 33.2 Bean Base.  
DCP Payment 07 \$1398.00

<b>Soils:</b>	<b>Colo-Judson</b>	<b>41.32 ac</b>
	<b>Higginsville</b>	<b>2.32 ac</b>
	<b>Marshall</b>	<b>14.09 ac</b>
	<b>Shelby</b>	<b>96.38 ac</b>

**Est. Project Income:**

**139.5 x \$175.00 -240 Cash Rent**

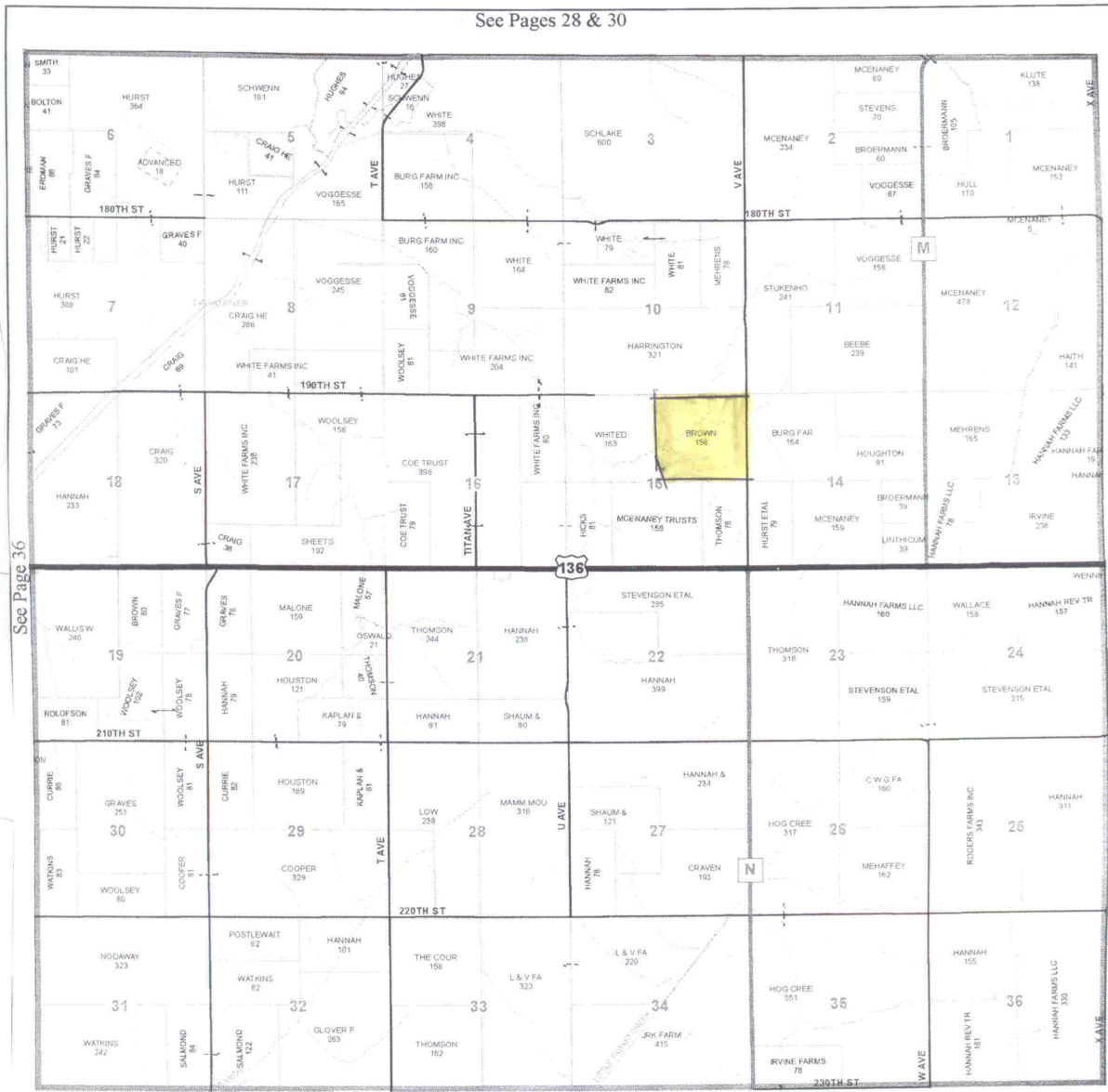
**Total Est. Income -\$24,430-\$33,480**

**Enterprise Realty LLC**  
**121 E 4th St.**  
**Maryville, MO. 64468**

**Office: (660) 582-7160**  
**www.entrealty.com**

Atchison County, MO  
T65N-R39W

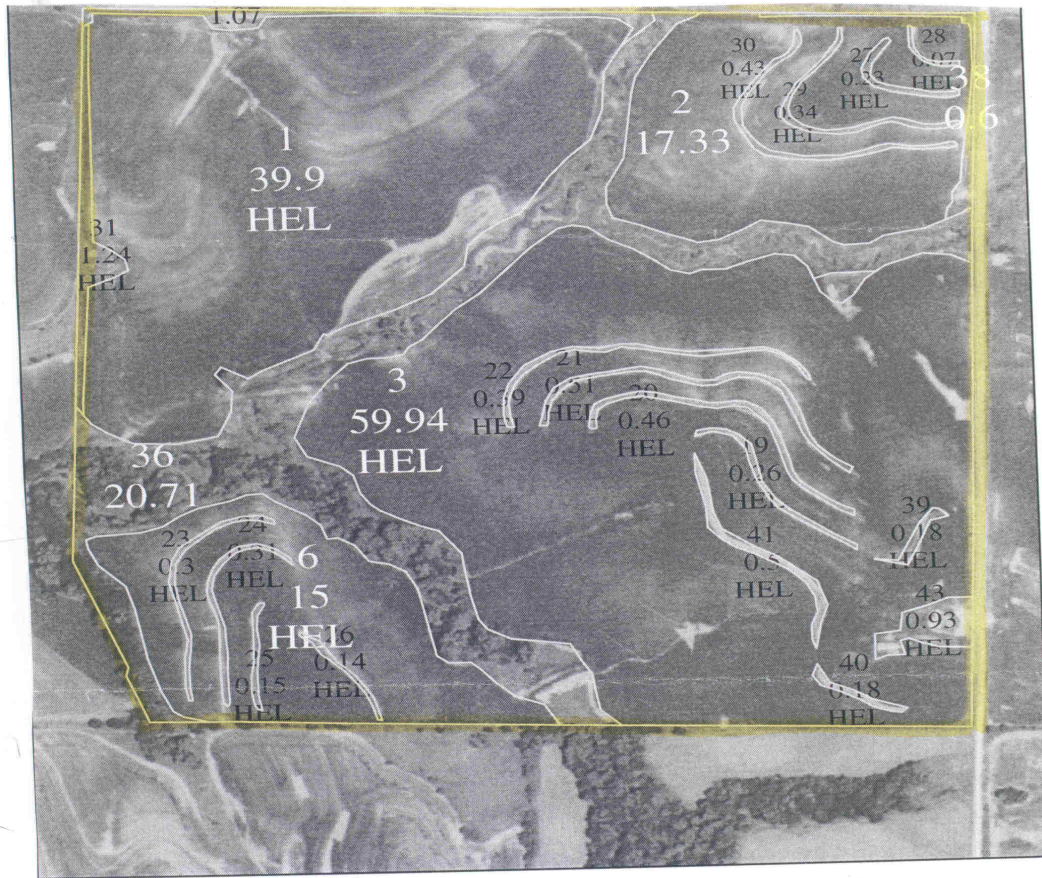
See Pages 28 & 30



See Page 50

**Enterprise Realty LLC**  
7160  
121 E 4th St.  
Maryville, MO. 64468

**Office: (660) 582-  
www.entrealty.com**



Atchison County FSA  
 Farm # 534  
 Tract 928 (1 of 1)  
 Sec 15 T 65 R 39 (O6)

March 13, 2008

w←

**Enterprise Realty**  
**121 E 4th St**  
**Maryville, MO. 64468**

**Office: (660) 582-7160**  
**www.entrealty.com**