

Nodaway County Row Crop Land

51+/- acres
\$2750/acre



List Price: \$140,250.00

Location: 6891 Century Trl, Clearmont, MO, 64431; E of Clearmont on Hwy C 3mi to Century Rd, S 3/4mi, Farm on W side of road

Legal: Twn 66, Rng 37, Sec 28
Nodaway County, MO, Legal to Govern

Total Acres: 52+/-, Selling 51+/- acres
(1 acre reserved for cemetery)

Total Tillable Acres: 42.9+/-

Est. Taxes: \$127.09

Est. DCP Payment: \$1,056.00

Total Est. Income:
42.9+/- acres tillable x \$150 = \$6,435.00

Corn Base: 26.2; **Grain Base:** 16.7

Excellent row crop land that is highly tillable. Land offers rolling hill ground.

Enterprise Realty & Auction, LLC

121 E. 4th St.

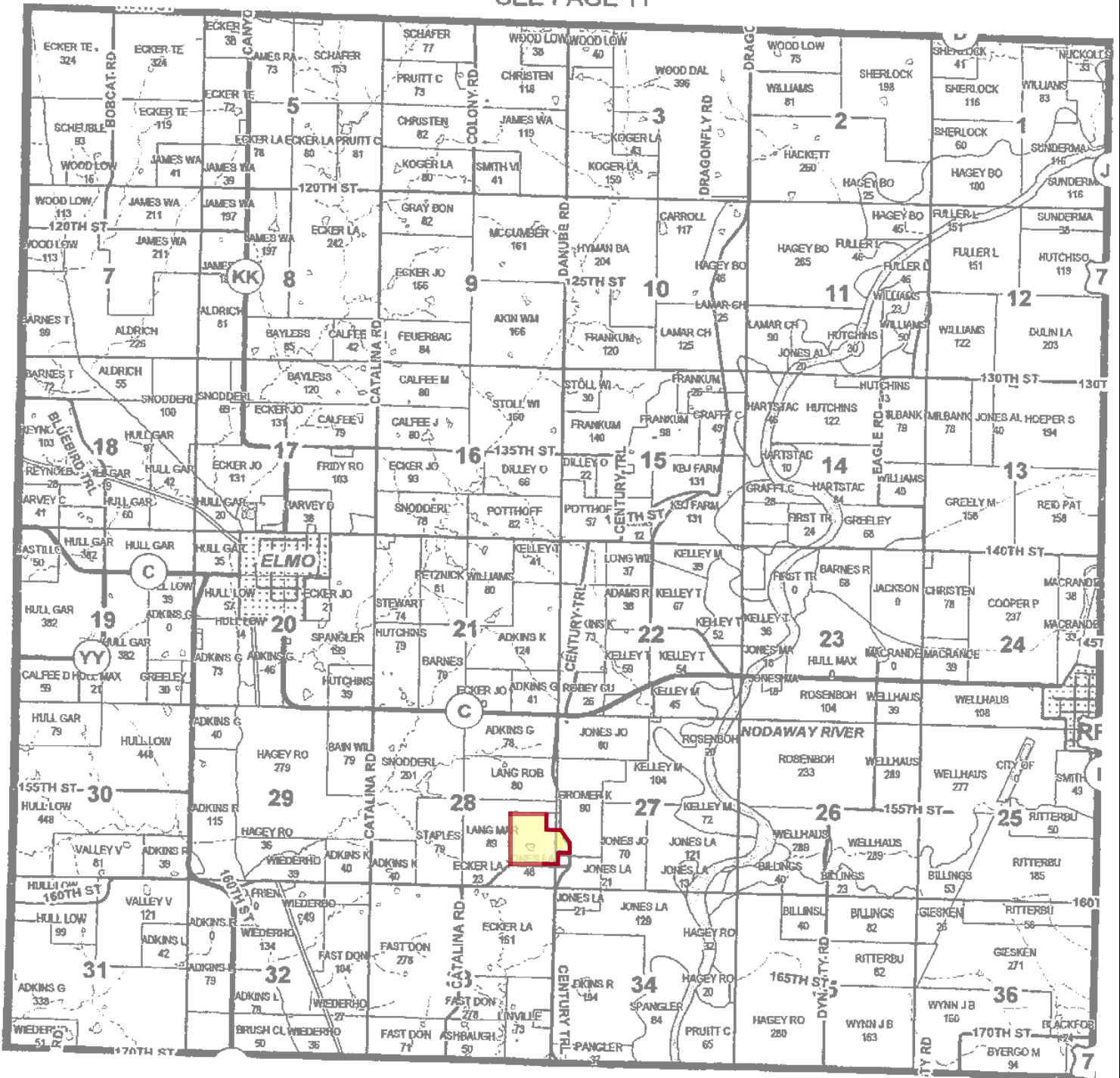
Maryville, MO 64468

Phone (660) 582-7160 Fax (660) 582-7162
property@entrealty.com www.entrealty.com



T66NR37W

SEE PAGE 11

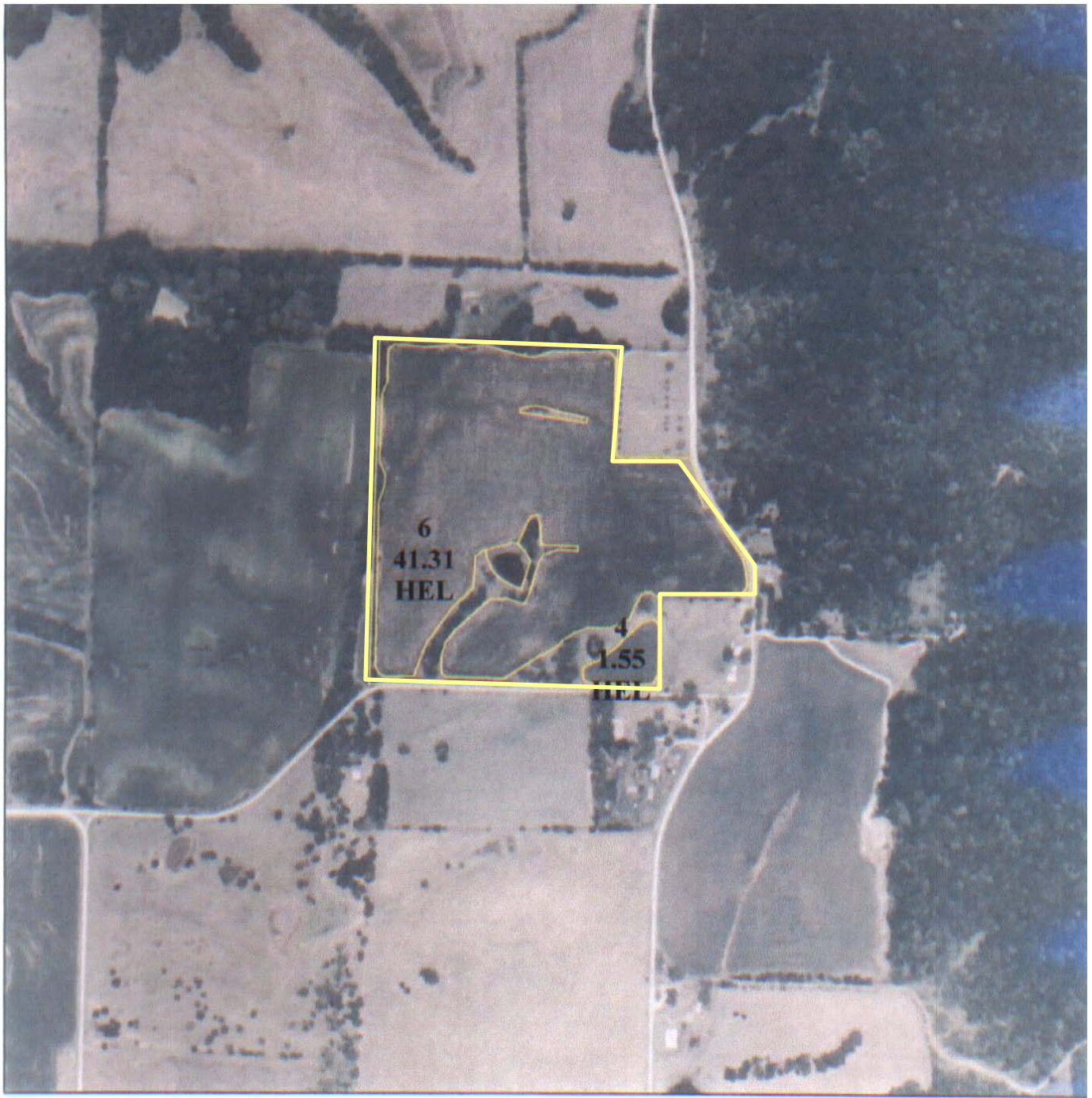


Enterprise Realty & Auction, LLC

121 E. 4th St.

Maryville, MO 64468

Phone (660) 582-7160 Fax (660) 582-7162
property@entrealty.com www.entrealty.com



USDA United States Department of Agriculture
Farm Service Agency



NODAWAY COUNTY FSA



Farm 6656
Tract 7093
S28-T66-R37 D3



Enterprise Realty & Auction, LLC

121 E. 4th St.

Maryville, MO 64468

Phone (660) 582-7160 Fax (660) 582-7162
property@entrealty.com www.entrealty.com